[illegible]

A horizontal number line with tick marks at every integer from 1 to 12. The numbers are labeled above the line.



Fig. 1.50

Elevatie AX 1
scara 1:30

3 1 3 1 3 1

80 1020 80 1020 80

P19 P19 P19

S1 S1

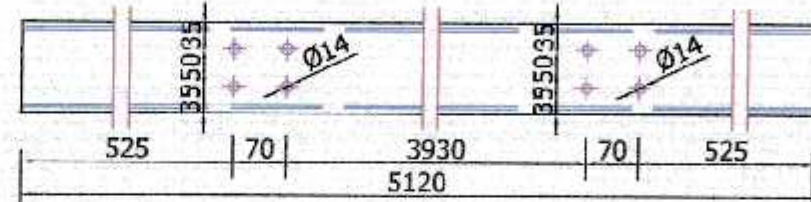
160 160 320 3680 4320 160 160 320

A B

scara 1:30

Structural drawing of a staircase frame (scara 1:30). The drawing shows a rectangular frame with dimensions and labels. The vertical dimensions are 80, 1020, 80, 1020, and 300. The horizontal dimensions are 160, 320, 3680, 320, and 160. The total width is 4320. The frame is labeled with S2, P19, and A. The drawing is titled "scara 1:30".

P21: UPN 120-5120mm
Scara1:10

45

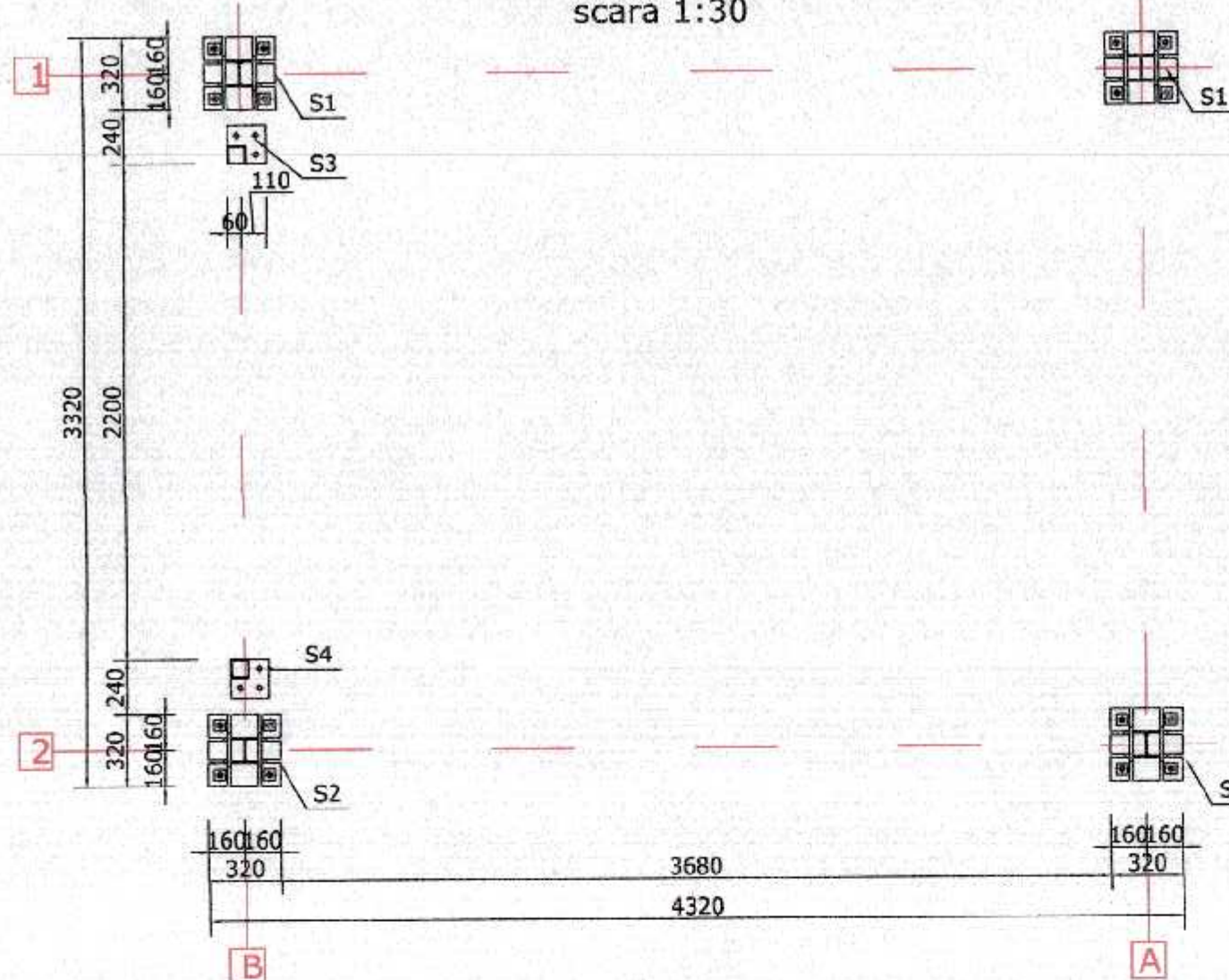
NOTA STRUCTURI METALICE:

- TOATE STRUCTURILE METALICE VOR FI REALIZATE DIN S355;
- TOATE ELEMENTELE METALICE SE INCADREAZA IN CATEGORIA B DE EXECUTIE (CONF. STAS 767/0-88);
- CLASA DE ACCEPTABILITATE A SUDURILOR ESTE C (CONF. C150-99 TABEL 5);
- SUDURILE DE COLT NESPECIFICATE IN DESEN VOR AVEA GROSIMEA 0.7 DIN CEL MAI SUBTIRE ELEMENT IMBINAT IAR LUNGIMEA SUDURII VA FI PE TOATA SUPRAFATA DE CONTACT;
- PROTECTIA ANTICOROZIVA : GRUNDUITA SI VOPSITA.

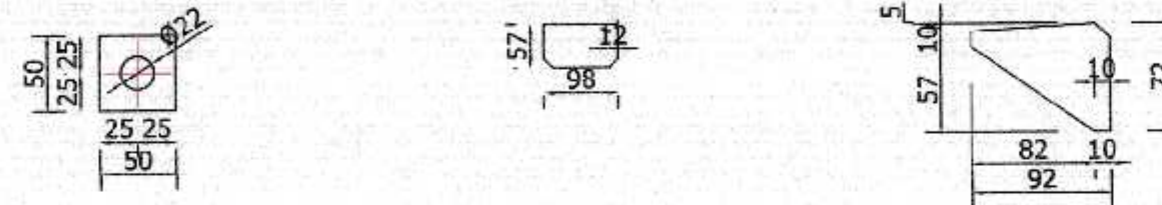
NOTA

- CATEGORIA DE IMPORTANTA "C" conform HG 766/1997
- CLASA DE IMPORTANTA "III" conform P100-1/2013
- CONSTRUCTIA ESTE AMPLASATA IN ZONA SEISMICA CU ACCELERATIA TERENULUI PENTRU PROIECTARE $a_g \geq 0.35g$ SI PERIOADA DE CONTROL (DE COLT) $T_c = 0.70 s$ - conform P100 - 1 / 2013
- DIMENSIUNI / COTE DESEN : IN MM;
- DOMENIUL DE VERIFICARE: A2

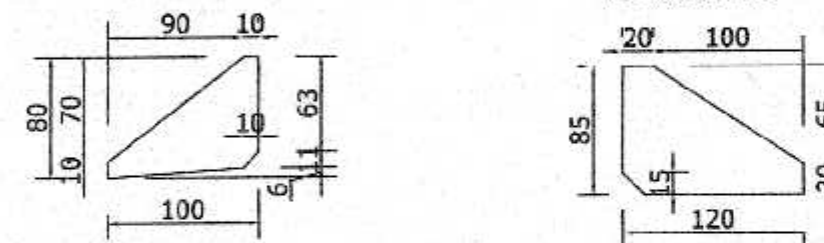
Plan amplasare stalpi
scara 1:30



P1: Placa 15x50-50mm Scara1:5
P2: Placa 6x57-98mm Scara1:10
P3: Placa 6x72-92mm Scara1:5



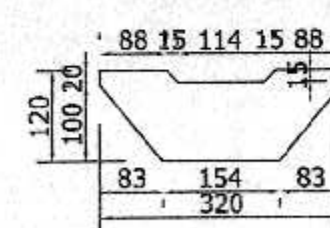
P5: Placa 6x80-100mm Scara1:5
P8: Placa 15x85x120mm Scara1:5



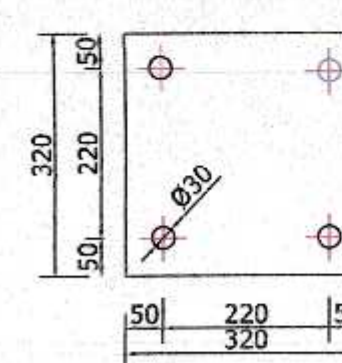
P9: Placa 12x170-170mm Scara1:10
P10: Placa 12x120-260mm Scara1:10



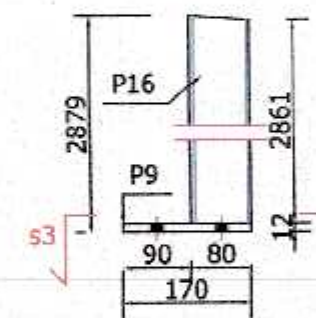
P11: Placa 15x120-320mm Scara1:10



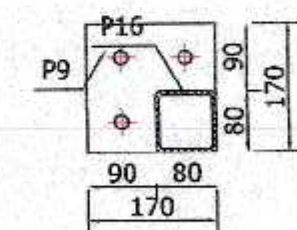
P12: Placa 20x320-320mm Scara1:10



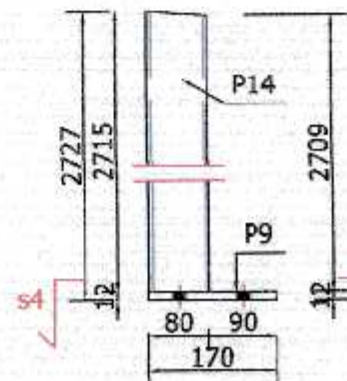
Stalpul S3 - vedere laterala
scara 1:10



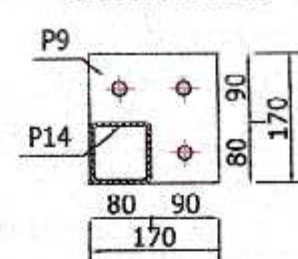
Sectioni s3-s3
scara 1:10



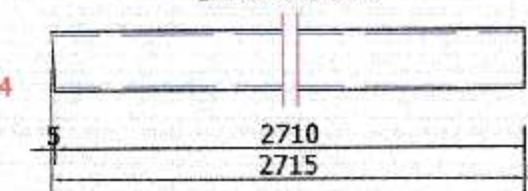
Stalpul S4 - vedere laterala
scara 1:10



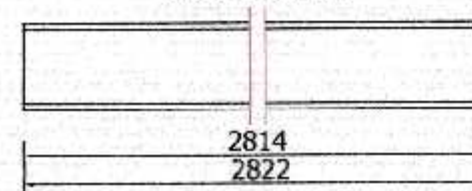
Sectioni s4-s4
scara 1:10



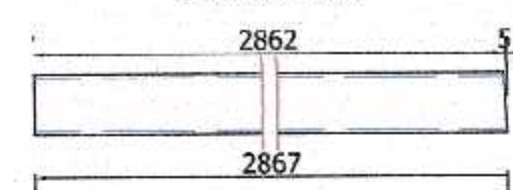
P14: Tv 80x80x5-2715mm Scara1:10



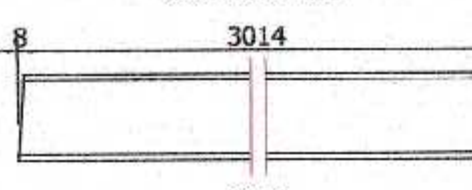
P15: HEA 120-2822mm Scara1:10



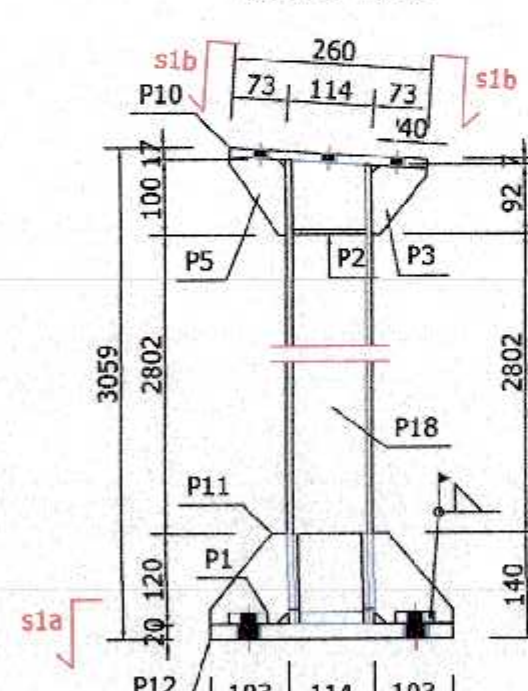
P16: Tv 80x80x5-2867mm Scara1:10



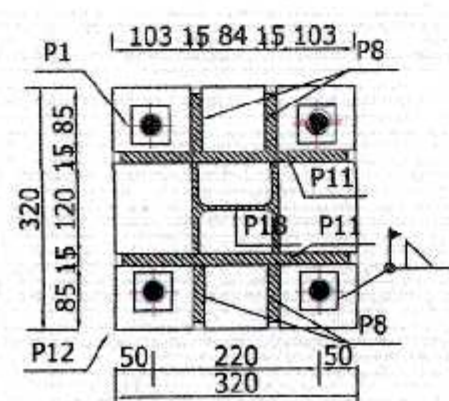
P18: HEA 120-3022mm Scara1:10



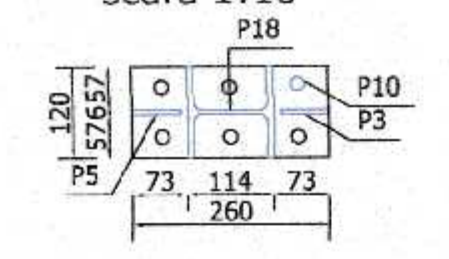
Stalpul S1 - vedere laterala
scara 1:10



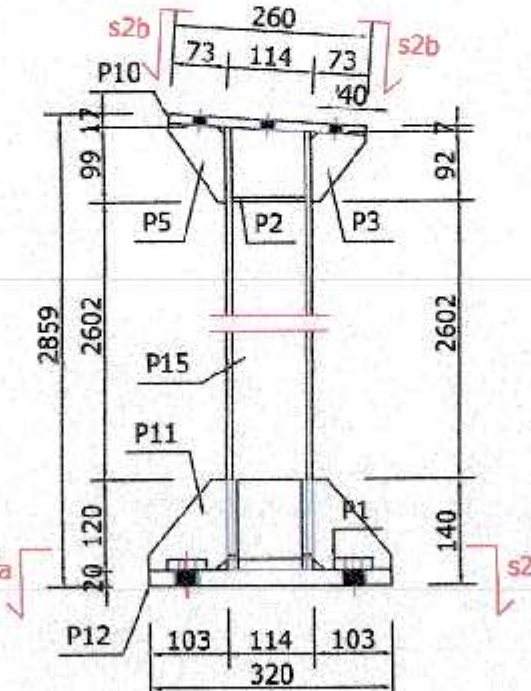
Sectioni s1a-s1a
scara 1:10



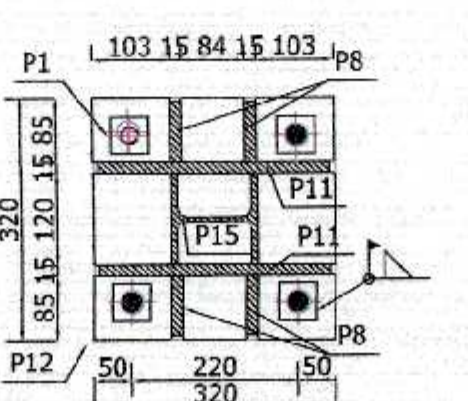
Sectioni s1b-s1b
scara 1:10



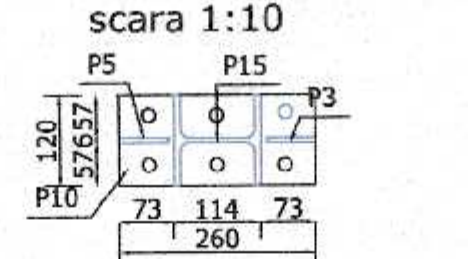
Stalpul S2 - vedere laterala
scara 1:10



Sectioni s2a-s2a
scara 1:10



Sectioni s2b-s2b
scara 1:10



Extras de materiale S1-2 bucaci

Poz.	Nume	Material	Norma Produs	Buc.	Dimensiuni (mm)	Greutate
P1	Plate	S235 J2	SR EN 10029-2011	4	15 50 50	0,29 - 1,18
P2	Plate	S235 J2	SR EN 10029-2011	2	6 57 98	0,26 - 0,53
P3	Plate	S235 J2	SR EN 10029-2011	1	6 72 92	0,31 - 0,31
P5	Plate	S235 J2	SR EN 10029-2011	1	6 80 100	0,38 - 0,38
P8	Plate	S235 J2	SR EN 10029-2011	4	15 85 120	1,20 - 4,80
P10	Plate	S235 J2	SR EN 10029-2011	1	12 170 170	2,72 - 2,72
P11	Plate	S235 J2	SR EN 10029-2011	2	15 120 320	4,52 - 9,04
P12	Plate	S235 J2	SR EN 10029-2011	1	20 320 320	16,08 - 16,08
P18	HEA 140	S235 J2	SR EN 10034 -1995	1	3022	19,89 60,11
Total (kg) - incluzand 3% sudura, pentru 1 ansamblu						98
Total (kg) - incluzand 3% sudura, pentru 2 ansambluri						196

Extras de materiale S2-2 bucaci

Poz.	Nume	Material	Norma Produs	Buc.	Dimensiuni (mm)	Greutate
P1	Plate	S235 J2	SR EN 10029-2011	4	15 50 50	0,29 - 1,18
P2	Plate	S235 J2	SR EN 10029-2011	2	6 57 98	0,26 - 0,53
P3	Plate	S235 J2	SR EN 10029-2011	1	6 72 92	0,31 - 0,31
P5	Plate	S235 J2	SR EN 10029-2011	1	6 80 100	0,38 - 0,38
P8	Plate	S235 J2	SR EN 10029-2011	4	15 85 120	1,20 - 4,80
P10	Plate	S235 J2	SR EN 10029-2011	1	12 170 170	2,72 - 2,72
P11	Plate	S235 J2	SR EN 10029-2011	2	15 120 320	4,52 - 9,04
P12	Plate	S235 J2	SR EN 10029-2011	1	20 320 320	16,08 - 16,08
P15	HEA 140	S235 J2	SR EN 10034 -1995	1	2822	19,89 58,13
Total (kg) - incluzand 3% sudura, pentru 1 ansamblu						94
Total (kg) - incluzand 3% sudura, pentru 2 ansambluri						188

Extras de materiale S3-1 bucaci

Poz.	Nume	Material	Norma Produs	Buc.	Dimensiuni (mm)	Greutate
P9	Plate	S235 J2	SR EN 10029-2011	1	12 170 170	2,72 - 2,72
P16	Tv 80x80x5	S235 J2	SR EN 10210 -1	1	2867	11,52 33,03
Total (kg) - incluzand 3% sudura, pentru 1 ansamblu						37

Extras de materiale S4 - 1 bucaci

Poz.	Nume	Material	Norma Produs	Buc.	Dimensiuni (mm)	Greutate
P9	Plate	S235 J2	SR EN 10029-2011	1	12 170 170	2,72 - 2,72
P14	Tv 80x80x5	S235 J2	SR EN 10210 -1	1	2715	11,52 31,28
Total (kg) - incluzand 3% sudura, pentru 1 ansamblu						35

NOTA STRUCTURI METALICE:

- TOATE STRUCTURILE METALICE VOR FI REALIZATE DIN S355;
- TOATE ELEMENTELE METALICE SE INCADREAZA IN CATEGORIA B DE EXECUTIE (CONF. STAS 767/0-88);
- CLASA DE ACCEPTABILITATE A SUDURILOR ESTE C (CONF. C150-99 TABEL 5);
- SUDURILE DE COLT NESPECIFICATE IN DESEN VOR AVEA GROSIMEA 0.7 DIN CEL MAI SUTIRE ELEMENT IMBINAT IAR LUNGIMEA SUDURII VA FI PE TOATA SUPRAFATA DE CONTACT;
- PROTECTIA ANTICOROZIVA : GRUNDUITA SI VOPSITA.

NOTA

- CATEGORIA DE IMPORTANTA "C" conform HG 766/1997
- CLASA DE IMPORTANTA "III" conform P100-1/2013;
- CONSTRUCTIA ESTE AMPLASATA IN ZONA SEISMICA CU ACCELERATIA TERENULUI PENTRU PROIECTARE $a_g = 0.35g$ SI PERIOADA DE CONTROL(DE COLT) $T_c = 0.70$ s - conform P100 - 1 / 2013
- DIMENSIUNI / COTE DESEN : IN MM;
- DOMENIUL DE VERIFICARE: A2.



REV.	DATA	DESCRIEREA MODIFICARILOR	DESENAT	VERIFICAT	APROBAT
04					
03					
02					
01	04.2019	Emis pentru construire	R. Brutaru M. Scurtu G. Panfilica		
00	02.2019	Prima revizie	R. Brutaru M. Scurtu G. Panfilica		
DENUMIRE PROIECT					
INSTALATIA					
SCARA:					
1:30					
Denumire desen					
PLAN SUPRASTRUCTURA MAGAZIE COMBUSTIBILI					
NUMAR PAGINA					
3/4					

